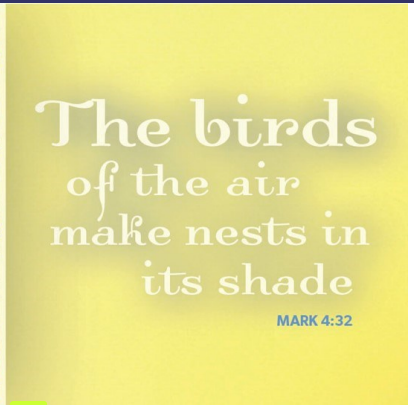


BETHEL NOTES



Double Week Issue

This Week's Bethel Notes is actually for the next **TWO weeks!** Tami will be out of the office next week and so combining the two weeks into one newsletter. There will be no Bethel Notes, next week.

This Sunday, June 9th at Bethel...

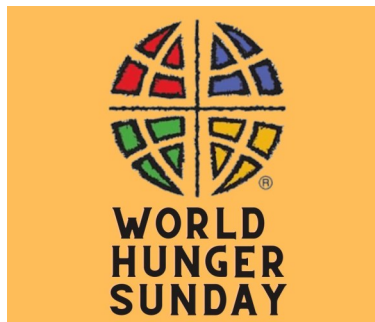
We celebrate the **3rd Sunday after Pentecost.**

We welcome and thank **Jim Carlson, LPA** presiding in worship this morning. Jim has been authorized by the Bishop of the Montana Synod to provide pastoral services in this congregation this Sunday.

Today we lift up **ELCA World Hunger** and receive an additional offering in the wicker basket.

After worship today we continue our **Adult Forum** continuing with The Chosen.

Tami Grosenick is out this week, Marilyn Carlson will be working in the office. **Office hours Monday through Thursday 10:00 am to 3:30 pm.**



Inside this issue:

Sunday, June 9th Gospel Message and Serving	2
Sunday, June 16th Gospel Message and Serving	3
Prayers Combined Worship	4
Blood Drive FLBC Camperships Bethel Bell Choir Adult Forum EMC Fall Fundraiser VBS Day Camp 2024	5
Just for YOUth	7
Calendar Ministries Preaching and Pre- siding at Bethel	8

Join us at 9:30 AM

in person or online at bethelmt.org.

Sunday, June 9th

GOSPEL MESSAGE

No Room for Compromise

Some things seem more trouble than they're worth. People who fish with monofilament line may find that when it kinks, and tangles it isn't worth the effort to pull apart the knots. Likewise for knitters whose balls of yarn unravel into a snarl on the floor. Or when packages of puff pastry can be had from the grocer's freezer case, a baker may well find making it from scratch more bother than benefit and opt for ready-made. Those banking on Jesus' admonition to forgive seventy times seven may find it impossible to make peace with his uncompromising warning that "whoever blasphemes against the Holy Spirit can never have forgiveness." Like a foreign-language crossword puzzle, it might seem unsolvable.

Some might find relief in joining the people gathered around Jesus' home who concluded that it would be best to ignore him: "He has gone out of his mind." Others, like his family, stay on the edge of conflict and attempt to restrain him—"Hush, you're making a scene." Tensions are high, not only out among the crowds, not merely *close* to home, but in the *center* of home, the very heart of community and family. The air sizzles with discord. It must have been like the many broken bonds and hollowed-out relationships familiar to us today, at a time roiling with division. Pursuing hope and finding healing might seem not worth the effort.

To that temptation Jesus delivers a scorching, confounding warning: by ascribing his actions to the evil one, rejecting good as though it were demonic, judging the spirit of God's love to be wicked—all of this is to choose *against* forgiveness and mercy. Without recognizing the urgency of love behind Jesus' warning, we may think his words a contradiction to Jesus' commitment to forgiveness. In fact, he uncompromisingly claims that the way of forgiveness belongs to the kingdom of God. Period!

Copyright © 2024 Augsburg Fortress.

All rights reserved.



JUNE 9TH

JIM CARLSON, LPA

Readings:

First Reading:
Genesis 3:8-15

Psalm:
Psalm 130

Second Reading:
2 Corinthians 4:13—5:1

Gospel Reading:
Mark 3:20-35

Serving Sunday, June 9th

Accompanists

Mary Seim, Piano

Lay Assistants

Ainsley Kubas

Usher

Walt Nuessle

Tech

Gabe Smith

Projection

Dave Scholten

Children's Church

Ava Fossen
Allison Marr

Hospitality

Terry Korpela

Counters

Stephanie Cummings
Laurie Turner

Sunday, June 16th

GOSPEL MESSAGE

God Gives the Growth

In the life of faith, we often look at ourselves and wonder if we're really growing at all. The temptation to examine ourselves and despair over our flaws (or perhaps to look at others and judge their weaknesses) is ever-present. For us as Christians, the call to repentance is critical; we are to be aware of our shortcomings, confess them, and receive God's forgiveness. But we shouldn't be too hard on ourselves either.

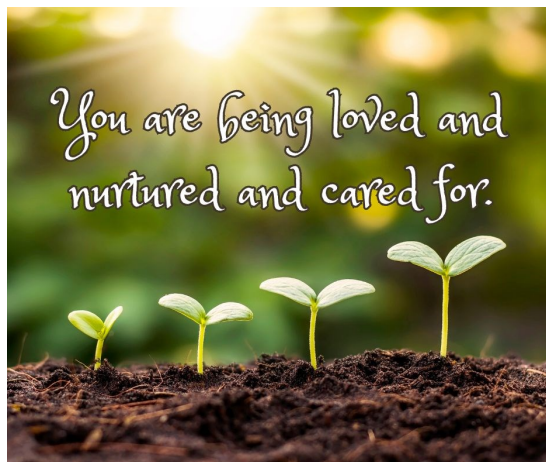
In the gospel reading today, Jesus uses two farming or gardening analogies to portray the kingdom of God. In the first he describes the entire process—from planting, through the various growth phases, and finally to the harvest. In the second he speaks of the tiny mustard seed which, over time, grows so large that it provides shelter for other creatures.

This is the kingdom of God as a whole, and also the individual's life of faith. The seeds of faith are planted in holy baptism. Over time, God as gardener nurtures us through worship, prayer, holy communion, the practice of confession and absolution, and fellowship with other believers, such that we grow in faith toward God and love toward our neighbors. You, who started out as the tiniest of seeds or the greatest of sinners or were carelessly scattered by others, are gently tended by Jesus, the Master Gardener. You are brought into the kingdom of God so you can grow and thrive and become life-giving for others.

You may "not know how" this has happened; you may not notice it in yourself, or even in other people sometimes. But God gives the growth, and what God sets in motion will come to fruition. That we are promised. So be gentle with yourself and with others. Trust the Lord and be patient. You are being loved and nurtured and cared for, even at this very moment.

Copyright © 2024
Augsburg Fortress.

All rights reserved.



JUNE 16TH

DAVE SCHOLTEN, LPA

Readings:

First Reading:
Ezekiel 17:22-24

Psalms:
Psalm 92:1-4, 12-15

Second Reading:
2 Corinthians 5:6-10, 14-17

Gospel Reading:
Mark 4:26-34

Serving Sunday, June 16th

Accompanists

Lynn Ryan, Piano

Lay Assistants

Stephanie Cummings

Usher

Sandy Pepos

Tech

Gabe Smith

Projection

TBD

Children's Church

Addi Carlson
Tyler Grosenick

Hospitality

Sandy Pepos

Counters

Pam Dougherty
Jeanne Rankin

*Lord,
in your mercy
hear our prayers.*



- ✠ Prayers of healing for **Dick Seim** as he is admitted to the Grandview for therapy.
- ✠ Prayers of healing for **Charlie Hill**, friend of *Jeanne Rankin*, who has been diagnosed with a brain tumor and is meeting with specialist to determine treatment.
- ✠ Prayers of healing for **Shannon Obrecht**, family friend of *Karen Lord*, as she experiences complications with cancer treatment.
- ✠ Prayers of healing for **Don Bisgard** as he has recovers from surgery as part of cancer treatment.
- ✠ Prayers of healing for **Kathleen**, friend of *Dena Wagner-Fossen*, as she continues medical testing at Mayo Clinic.
- ✠ Prayers of continued healing for **Eric Peterson** as he receives chemotherapy that has slowed the progression of cancer growth.
- ✠ Prayers of healing for **Georgia Miller**, cousin of *Amber Erickson's*, as she has been going through treatment for breast cancer and is doing well. Hoping to only have a couple more treatments to go.
- ✠ Prayers of healing for **Sharon Bossie** as she manages chemotherapy treatments.
- ✠ Prayers of healing for **Broc Cole**, child of a friend of *Ali Morris*, as he battles lymphoma.
- ✠ Prayers of healing for **Kristin**, *Bobbie Bowen's* daughter, as she continues treatment for cancer.
- ✠ Prayers of support and comfort for **Pat Berkeley**.
- ✠ Prayers of healing for **Alex Bostic** as he continues to manage his health.
- ✠ Prayers of strength in leadership for **Gustavo Driau**, Regional Representative of South America.
- ✠ Prayers of healing for **Ed Pottratz** as he continues cancer treatment.

Combined
Worship
at Bethel June 23rd
9:30 am
All are Welcome!



Redeemer
Lutheran Church



American Red Cross

Blood Drive at Bethel

July 15th

**Sign Up to give blood.
More details to come.**

Who Can Donate

- Be in good general health and feeling well.
- Be at least 17 years old in most states (16 years old with parental consent in some states).
- Weigh at least 110 pounds. Additional weight requirements apply for donors 18 years old and younger and all high school donors.
- Have not donated blood in the last 56 days

What to Expect at My Donation

1. Register, show your ID and read some required information.
2. Health History and Mini-physical, answer some questions and receive a general health check.
3. The Donation, you will be seated comfortably while a pint of blood is drawn. This will take about 8-10 minutes.
4. Refresh and Recover, afterwards, you can enjoy a snack and drink for 10-15 minutes before resuming your day.

Sign Ups will begin shortly.



Camperships

Available!

Scholarships for Camp are available. If you or someone you know would like to attend Flathead Lutheran Bible Camp this summer we have \$400.00 per child available to help pay for camp.

If you have registered or are about to register, contact the Bethel Office at 406-761-1543 or email bethelgf.church@gmail.com to take advantage of this opportunity.

Check our FLBC.net for information regarding camps this summer.

JOIN NOW
Bethel Handbell Choir

Playing on Sunday, June 23rd.

Rehearsal will be Saturday, June 22nd from 10 am to Noon.

If you would like to play in the Bell Choir, email Sharon Mueller at oboecclar@gmail.com by Tuesday, June 18th

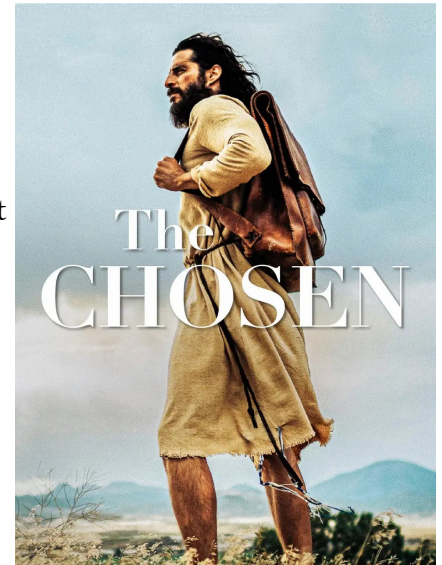
Adult Forum The Chosen

We will watch and discuss The Chosen Season 3 Episodes 5 and 6 this Sunday, June 9th. We won't meet on Father's day or the 23rd but will finish on Monday June 24 from 2pm to 5pm.

As we wrap-up this Adult Forum, a note from Terry Korpela on this fellowship time together.

"You may think attending Adult Forum is 'Geez another hour at church when I could be watching a hockey game, doing laundry, preparing lunch, or catching up on mail.' And believe me I have thought of all those things (well maybe not the hockey game). But adult forum is well worth the extra hour at church. We have been watching "The Chosen". What a well-done series about our Lord. Is it all straight out of the Bible - no. What it is, is life's struggles. How our human Lord juggled family, traveling, relationships, worries, knowing what he had to do and that the end was not easy or wanted. "The Chosen" brings the Gospels home. Adult Forum has made relationships stronger. You learn so much through discussion and sharing. Everyone should give Adult Forum a go. You won't be disappointed."

More Adult Forums will be scheduled throughout the rest of summer and into the fall. Stay tuned to our Bethel Notes and Sunday announcements for upcoming events.



October Fall Fest Save the Date

This year, our Emmaus October Fall Fest Fundraiser event will be held on October 6th at Ten Spoon Winery—4175 Rattlesnake Drive, Missoula MT—from 3:00 pm to 6:00 pm. There will be several new elements to our annual program which will include: bingo, magic, family fun activities and live music! Brin the whole family and come celebrate Campus Ministry with us!



To register for Camp or to apply to be a Junior Counselor got to bethelmt.org and click on Youth Activities, VBS.

JUST 4 YOUTH

I'm sorry

Sometimes we do things we shouldn't. Adam and Eve felt sad about disobeying God. They tried to hide in the shadows but God knew already that they had disobeyed. **Match the shadowy outlines to the real creatures on this page.**

J
U
N
E



We sometimes want to hide what we have done to our family or our friends, especially if we have hurt them with what we say or do. Instead, we need to say "I'm sorry" to them and also to God. God will forgive our sins every day. We always know that we are a part of God's family.



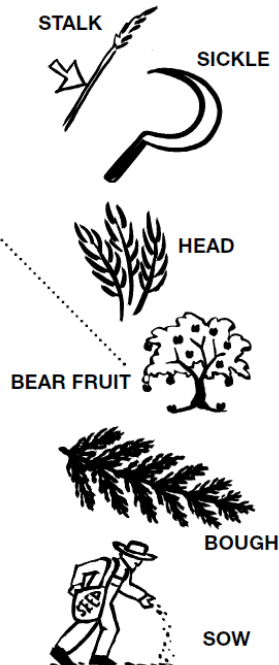
Decide how to praise God with your whole body today—eyes, ears, mouth, hands, feet on the outside and heart, mind, and spirit on the inside.

Today's gospel, and also the First Reading, talk about growing things. Jesus said that God's kingdom is, in a way, like seeds that have been planted and now are growing.

Below, match the meaning on the left with the correct picture in the middle. Then, just for fun, see if you can match that picture to something on the right that sounds like it. (Like the way "I" and "eye" sound alike.)

DEFINITIONS

1. To grow and produce great results. We "bear fruit" when we tell lots of people about Jesus.
2. To spread and plant seed on the ground
3. The top of a wheat or other grain stalk that contains the good usable grain
4. The stem of a plant
5. A curved cutting tool used for harvesting grain
6. A sturdy branch of a tree



J
U
N
E



Memorize a verse from today's lesson: "If anyone is in Christ, there is a new creation." 2 Corinthians 5:17a
How can you become a new creation every day?

CALENDAR OF EVENTS

THIS WEEK

Tuesday 6/11

- Electric City Bible Study, Zoom meeting 7:00 am

Thursday 6/13

- Exec Board Zoom meeting 6:30 pm

Friday 6/14

- Bethel office is closed.

NEXT WEEK

Sunday 6/16

- Worship service led by Dave Scholten, LPA in person and live stream at 9:30 am
- Happy Father's Day!!
- No Adult Forum

Tuesday 6/18

- Electric City Bible Study, Zoom meeting 7:00 am
- Council meeting in the Fellowship Hall 6:30 pm

Friday 6/21

- Bethel office is closed.

UPCOMING EVENTS

Sunday 6/23

- Joint Worship service with Redeemer Lutheran Church led by Pastor Sara Branom in person and live stream at 9:30 am
- Handbell choir

Tuesday 6/25

- Electric City Bible Study, Zoom meeting 7:00 am

Friday 6/28

- Bethel office is closed.

Fellowship Ministries

Electric City Bible Study—online

What a great way to connect with one another! Join our bible study via Zoom, Tuesday mornings at 7:00 am. Contact Laurie Turner at lolli51gus@icloud.com for a link to join the meeting.

Men's Breakfast

Join us for a fun and engaging conversation, and insightful discussion of each week's lectionary texts as we meet in the Fellowship Hall Tuesday mornings at 7:00 am. Contact Dave Scholten at dscholten@dlsconsulting.net for more information.

On hold until September

Hope Circle—in person

This group meets once a month usually on Tuesday or Thursday afternoons. Bible study and fellowship are celebrated with this group of ladies. Contact Terry Korpela to be on the group email for meetings and prayer requests terry.korpela@gmail.com.

On hold until September

Preaching And Presiding at Bethel

June 9th	Jim Carlson, LPA
June 16th	Dave Scholten, LPA
June 23rd	Pastor Sara Branom
June 30th	Aaron Decker, Missionary from Bolivia
July 7th	Pastor Steve Nelson
July 14th	Jim Carlson, LPA
July 21st	Joint worship at Redeemer 10:00 am
July 28th	Dave Scholten
August 4th	Dave Scholten